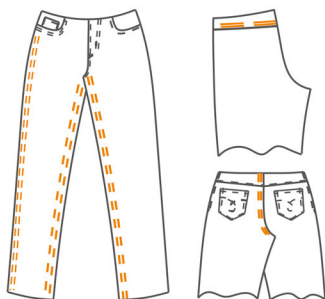




TF-9588

高速多功能曲腕机

High-speed chain circumferential sewing machine



- ★ **自动抬压脚，压脚、拖轮单独控制**
Automatic presser, the presser and the tugging wheel can be controlled independently
- ★ **立式脚架踏板控制**
Vertical stand, pedal controlling style
- ★ **自动控制线头长短**
Automatic control of thread length
- ★ **机针自动冷却装置**
Automatic needle cooling device
- ★ **自动加油**
Automatic refueling

功效：采用自动加油,转速比普通埋夹车增加**1000**转，比同类型产品提升**35%**产量。

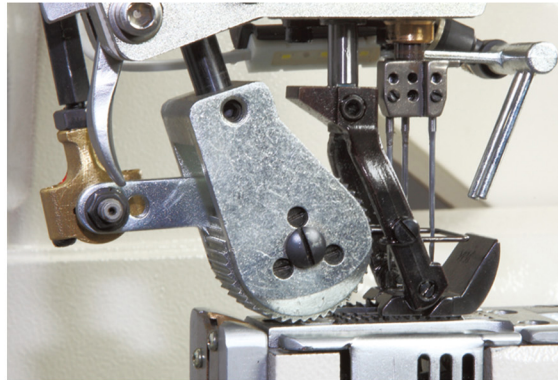
Effect: Automatic refueling mode can help to increase speed by 1000 rounds compared with ordinary buried folder car, and improve the yield by 35% compared with the same type of products.

全自动立式脚架，踏板控制，自动控制线头长短，机针自动冷却装置，制动抬压脚装置，压脚拖轮独立提升。

It has automatic vertical stand, automatic needle cooling device and automatic presser lifting device, and the presser tugging wheel can be lifted independently.



机针冷却装置
Needle cooling device



压脚、拖轮单独控制
Presser and tugging machine can be respectively controlled



自动加油
Automatic refueling

技术规格 Technical specifications

缝制工序	Sewing process	3针链缝 3-needle chain stitch
最高缝制速度	Maximum sewing speed	4500 rpm
机针	Machine needle	TVx5#21
针数	The number of needles	3针 Needle
针距	Stitch length	可选配 Optional (G9/32 H5/16 K3/8 L1/2)
送料量	Feeding quantity	2.0mm-5.2mm/针 Needle
剪线	Thread cutting	自动 Automatic
抬压脚	Presser	自动 Automatic
机针冷却装置	Needle cooling device	标准装备 Standard equipment
供油方式	Refueling mode	自动 Automatic
马达	Motor	台湾贺兴伺服电机, Taiwan Hexing servo motor
集尘装置	Debris collecting device	标准装备 Standard equipment
机器尺寸	Machine size	1510×1310×1100mm (L×W×H)
重量	Weight	140kg

TOPEAGLE



地址：西安市高新区丈八二路31号逸翠尚府北区1栋4单元1201室
 Add: 4-1201, Block 1, No.31 Zhangba Er Road, Xi 'an, China-710065
 Tel : +86-29-68723798 / 68829612 Web: www.eagleco.cn
 Fax : +86-29-68723818 E-mail : sale@eagleco.cn